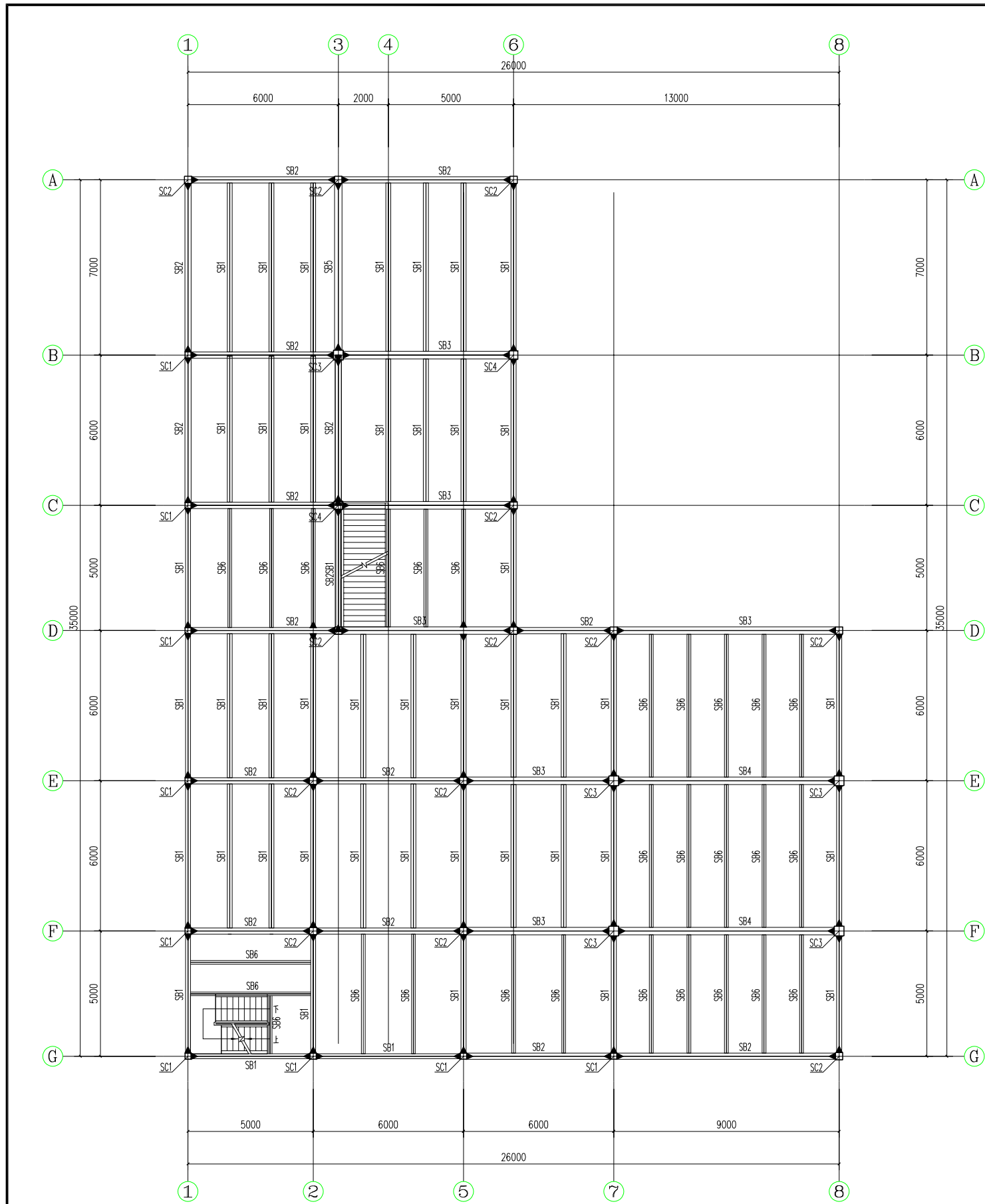


构件表 Component table				
序号 No.	名称 Name	截面 Specifications	材质 Material	备注 Instructions
SC1	Frame column	250X250X8	Q355B	
SC2	Frame column	300X300X10	Q355B	
SC3	Frame column	350X350X12	Q355B	
SC4	Frame column	400X400X14	Q355B	
SB1	Frame beam	HM294X200X8X12	Q355B	
SB2	Frame beam	HM340X250X9X14	Q355B	
SB3	Frame beam	HM390X300X10X16	Q355B	
SB4	Frame beam	HM488X300X11X18	Q355B	
SB5	Frame beam	HN300X300X10X15	Q355B	
SB6	Frame beam	HN300X150X6.5X9	Q355B	

The First Floor Steel Frame Plan 1:100

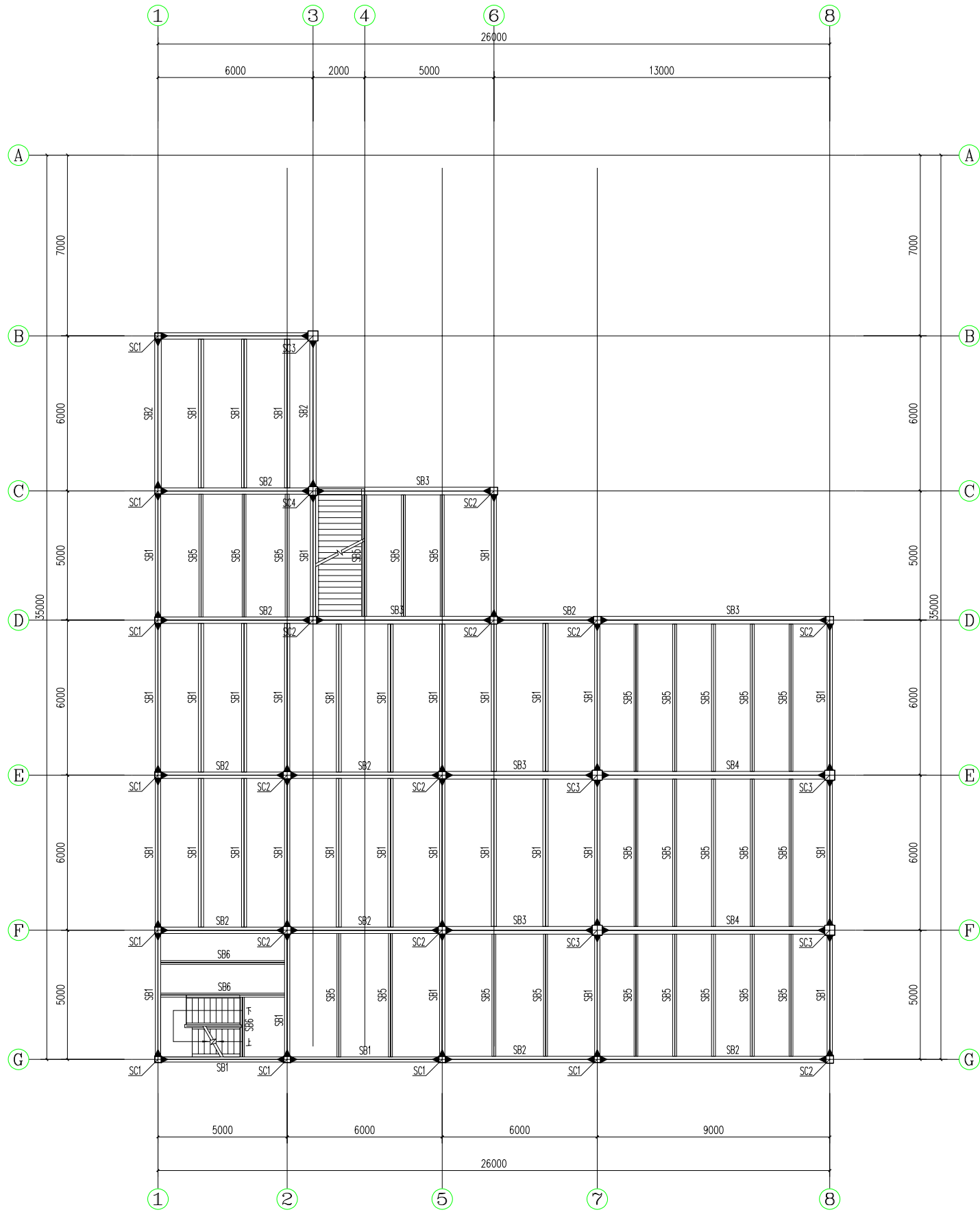
荷载说明 Load instructions	风荷载 Wind Load	0.4KN/m ²	 Hangzhou Xixi Building Co., LTD No. 1000, Xixi Road, Xixi, Hangzhou, China Tel: 0571-86557133, Fax: 0571-86557134 Website: www.pnfabuilding.com	设计人 Designed	Engr. Wang Huaizhi	项目名称 Project Name	Four Storey Car Parking	图纸名称 Drawings Name	一层梁柱布置图 First Floor Steel Frame Plan	阶段 Stage	设计图 Design Drawing
楼面恒载 Floor Dead Load	2.0KN/m ²	屋面恒载 Roof Dead Load		项目负责人 Project Leader	Carson Liu	总页码 Total Page	共 8 张 Total Pieces: 8	页码 Page	第 2 张 Page 2	日期 Date	2023.12.28
楼面活载 Floor Live Load	1.0KN/m ²	屋面活载 Roof Live Load								比例 Scale	1:100



The Second Floor Steel Frame Plan 1:100

构件表 Component table				
编号 No.	名称 Name	规格 Specifications	材质 Material	备注 Instructions
SC1	Frame column	250x250x8x8	Q355B	
SC2	Frame column	300x300x10x10	Q355B	
SC3	Frame column	400x400x14x14	Q355B	
SC4	Frame column	350x350x12x12	Q355B	
SB1	Frame beam	HM294x200x8x12	Q355B	
SB2	Frame beam	HM340x250x9x14	Q355B	
SB3	Frame beam	HM390x300x10x16	Q355B	
SB4	Frame beam	HM488x300x11x18	Q355B	
SB5	Frame beam	HN300x300x10x15	Q355B	
SB6	Frame beam	HN300x150x6.5x9	Q355B	

荷载说明 Load instructions	风荷载 Wind Load	0.4KN/m ²	 Hangzhou Xixi Building Co., LTD Mr. Cancan Kang Cell Phone & WhatsApp & Viber: 00861375163354 WeChat: 66048373 Homepage: www.prefabbuilding.com Add: 22th Floor, Xinyi Guangchang, Xiaoshan, Hangzhou, China	设计人 Designed	Engr. Wang Huaizhi	项目名称 Project Name	Four Storey Car Parking	图纸名称 Drawings Name	二层梁柱布置图 Second Floor Steel Frame Plan	阶段 Stage	设计图 Design Drawing
楼面恒载 Floor Dead Load	2.0KN/m ²	屋面恒载 Roof Dead Load		项目负责人 Project Leader	Carson Liu	总页码 Total Page	共 8 张 Total Pieces: 8	页码 Page	第 3 张 Page 3	日期 Date	2023.12.28
楼面活载 Floor Live Load	1.0KN/m ²	屋面活载 Roof Live Load		比例 Scale	1:100						

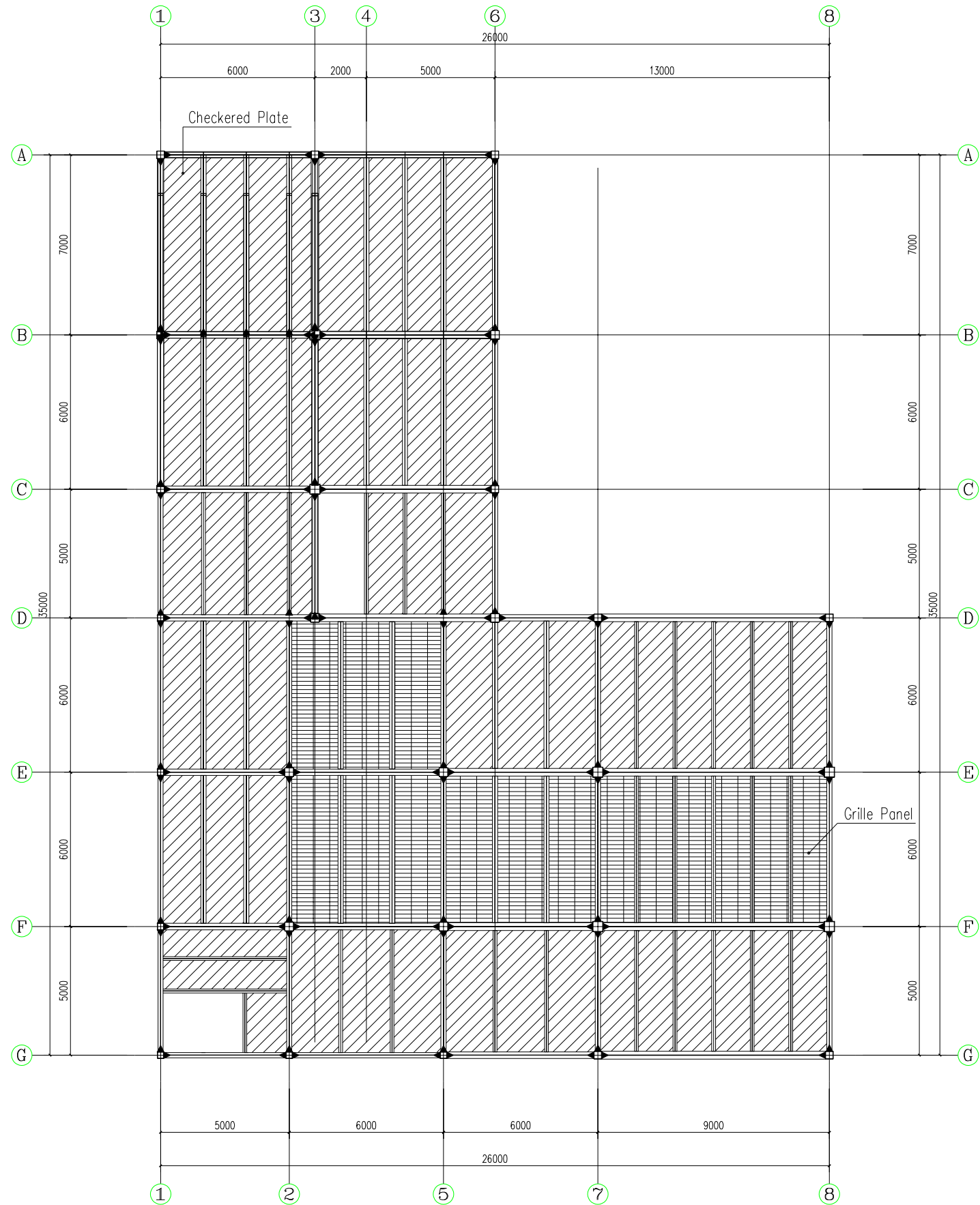


构件表 Component table

构件号 No.	名称 Name	规格 Specifications	材质 Material	备注 Instructions
SC1	Frame column	250x250x8x8	Q345B	
SC2	Frame column	300x300x10x10	Q345B	
SC3	Frame column	400x400x14x14	Q345B	
SC4	Frame column	350x350x12x12	Q345B	
SB1	Frame beam	HM294x200x8x12	Q345B	
SB2	Frame beam	HM340x250x9x14	Q345B	
SB3	Frame beam	HM390x300x10x16	Q345B	
SB4	Frame beam	HM488x300x11x18	Q345B	
SB5	Frame beam	HN300x150x6.5x9	Q345B	

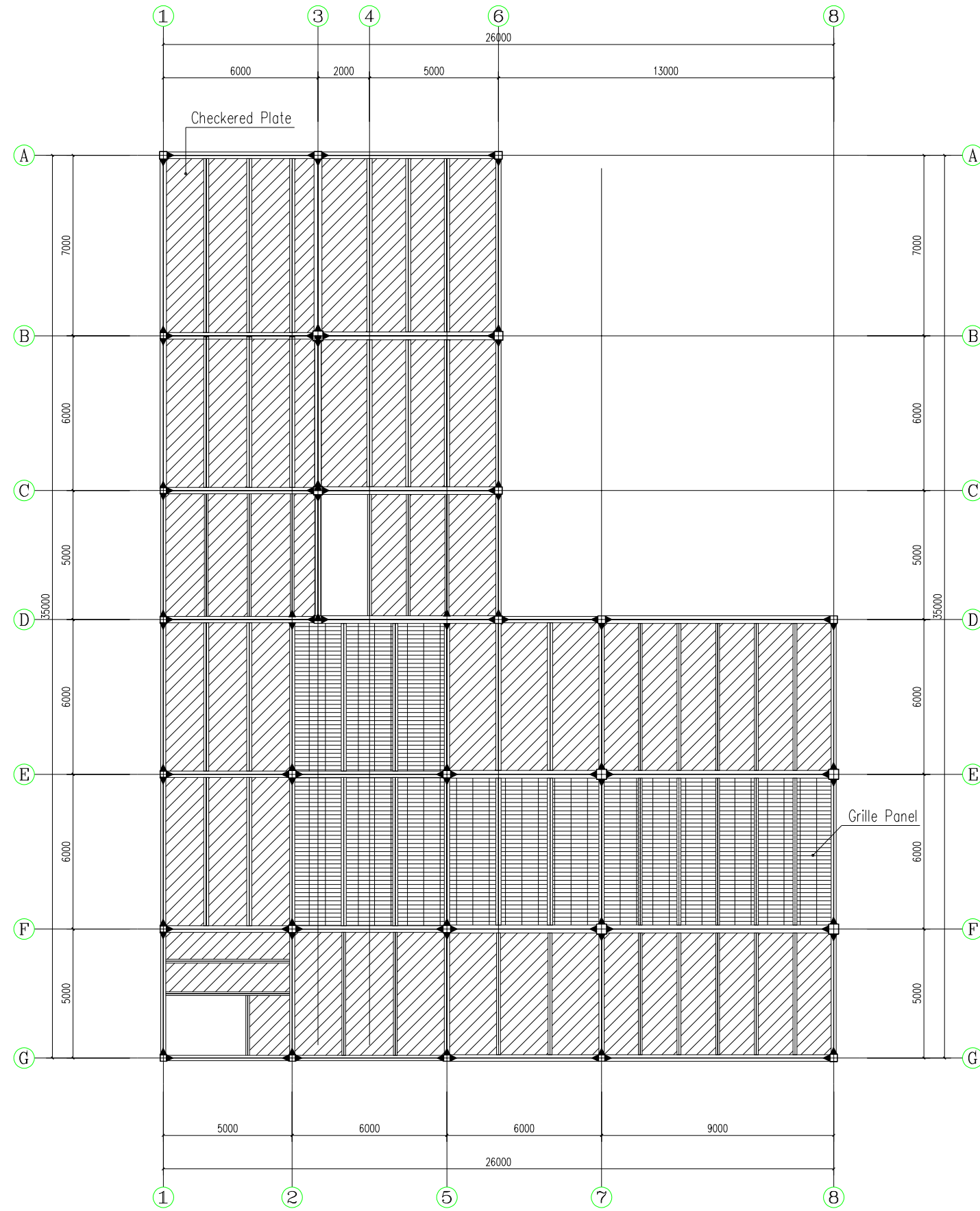
The Third Floor Steel Frame Plan 1:100

荷载说明 Load instructions	风荷载 Wind Load	0.4KN/m ²	<p>Hangzhou Xixi Building Co., LTD Mr. Cancan Kang Cell Phone & WhatsApp & Viber: 008613757163354 WeChat: 66086573 Homepage: www.pnifabuilding.com Add: 22th Floor, Xinyi Guangchang, Xiaoshan, Hangzhou, China</p>	设计人 Designed	Engr. Wang Huaizhi	项目名称 Project Name	Four Storey Car Parking	图纸名称 Drawings Name	三层梁柱布置图 Third Floor Steel Frame Plan	阶段 Stage	设计图 Design Drawing
楼面恒载 Floor Dead Load	2.0KN/m ²	屋面恒载 Roof Dead Load		项目负责人 Project Leader	Carson Liu	总页码 Total Page	共 8 张 Total Pieces: 8	页码 Page	第 4 张 Page 4	日期 Date	2023.12.28
楼面活载 Floor Live Load	1.0KN/m ²	屋面活载 Roof Live Load								比例 Scale	1:100



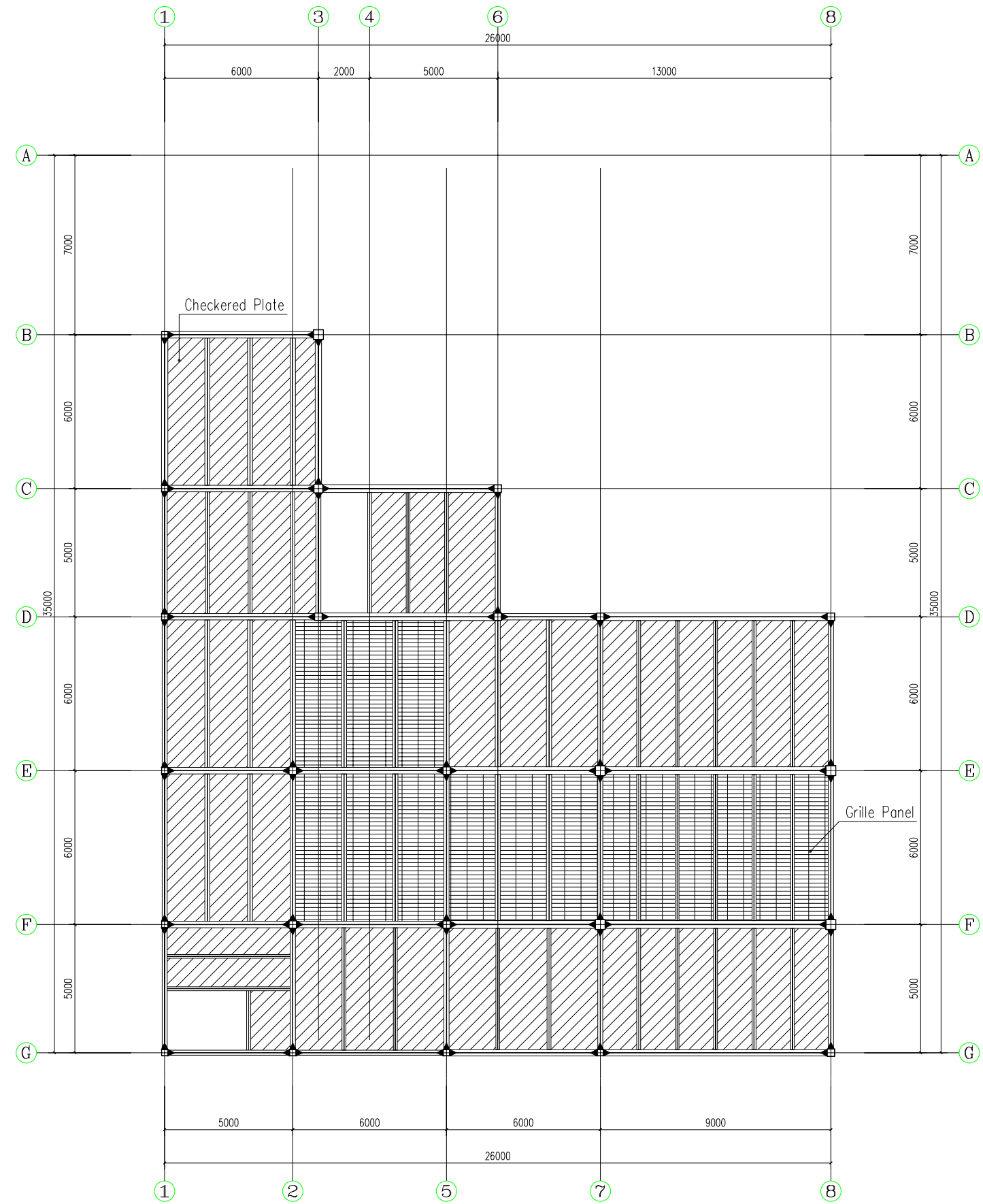
The First Floor Slab Plan 1:100

荷载说明 Load instructions	风荷载 Wind Load	0.4KN/m ²	 Hangzhou Xixi Building Co., LTD Mr. Cancan Kang Cell Phone & WhatsApp & Viber: 008613757163354 WeChat: 66048373 Homepage: www.pdfbuilding.com Add: 22th Floor, Xinyi Guangchang, Xiaoshan, Hangzhou, China	设计人 Designed	Engr. Wang HuaiZhi	项目名称 Project Name	Four Storey Car Parking	图纸名称 Drawings Name	一层楼板布置图 The First Floor Slab Plan	阶段 Stage	设计图 Design Drawing
楼面恒载 Floor Dead Load	2.0KN/m ²	屋面恒载 Roof Dead Load		项目负责人 Project Leader	Carson Liu	总页码 Total Page	共 8 张 Total Pieces: 8	页码 Page	第 5 张 Page 5	日期 Date	2023.12.28
楼面活载 Floor Live Load	1.0KN/m ²	屋面活载 Roof Live Load								比例 Scale	1:100



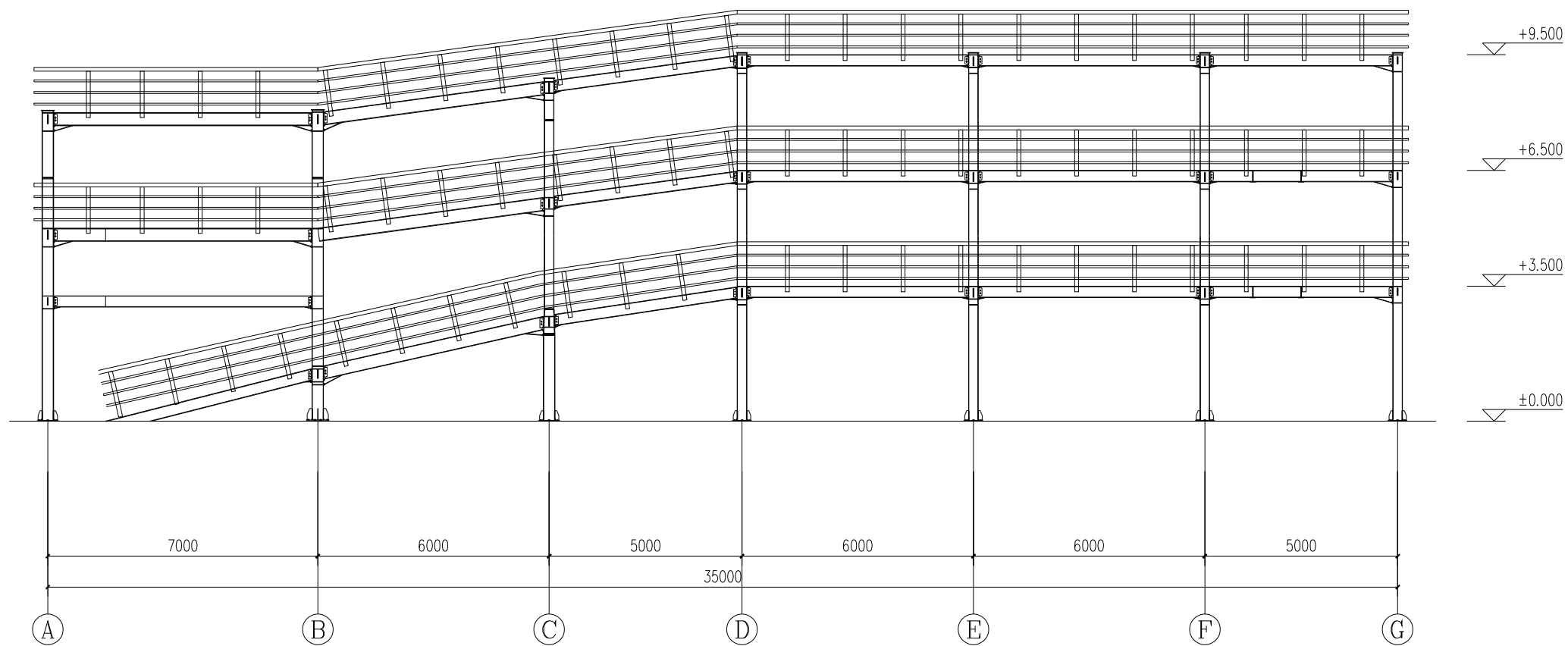
The Second Floor Slab Plan 1:100

荷载说明 Load instructions		风荷载 Wind Load	0.4KN/m ²	 Hangzhou Xixi Building Co., LTD Mr. Cancan Kang Cell Phone & WhatsApp & Viber: 0086 13757163354 WeChat: 66048573 Homepage: www.prfabuilding.com Add: 22th Floor, Xinyi Guangchang, Xiaoshan, Hangzhou, China	设计人 Designed	Engr. Wang HuaiZhi	项目名称 Project Name	Four Storey Car Parking	图纸名称 Drawings Name	二层楼板布置图 The Second Floor Slab Plan	阶段 Stage	设计图 Design Drawing
楼面恒载 Floor Dead Load	2.0KN/m ²	屋面恒载 Roof Dead Load			项目负责人 Project Leader	Carson Liu	总页码 Total Page	共 8 张 Total Pieces: 8	页码 Page	第 6 张 Page 6	日期 Date	2023.12.28
楼面活载 Floor Live Load	1.0KN/m ²	屋面活载 Roof Live Load									比例 Scale	1:100



The Third Floor Slab Plan 1:100

荷载说明 Load instructions		风荷载 Wind Load	0.4KN/m ²	 Hangzhou Xixi Building Co., LTD Mr. Cancan Kang Cell Phone & WhatsApp & Viber: 008613757163354 WeChat: 66048573 Homepage: www.pxfabuilding.com Add: 22th Floor, Xinyi Guangchang, Xiaoshan, Hangzhou, China	设计人 Designed	Engr. Wang HuaiZhi	项目名称 Project Name	Four Storey Car Parking	图纸名称 Drawings Name	三层楼板布置图 The Third Floor Slab Plan	阶段 Stage	设计图 Design Drawing
楼面恒载 Floor Dead Load	2.0KN/m ²	屋面恒载 Roof Dead Load			项目负责人 Project Leader	Carson Liu	总页码 Total Page	共 8 张 Total Pieces: 8	页码 Page	第 7 张 Page 7	日期 Date	2023.12.28
楼面活载 Floor Live Load	1.0KN/m ²	屋面活载 Roof Live Load									比例 Scale	1:100



The "1" Axis Facade Plan 1:100

荷载说明 Load instructions		风荷载 Wind Load	0.4KN/m ²	 <p>Hangzhou Xixi Building Co., LTD Mr. Cancan Kang Cell Phone & WhatsApp & Viber: 008613757163354 WeChat: 66048573 Homepage: www.prefabuilding.com Add.: 22th Floor, Xinyi Guangchang, Xiaoshan, Hangzhou, China</p>	设计人 Designed	Engr. Wang HuaiZhi	项目名称 Project Name	Four Storey Car Parking	图纸名称 Drawings Name	立面布置图 The Elevation Plan	阶段 Stage	设计图 Design Drawing
楼面恒载 Floor Dead Load	2.0KN/m ²	屋面恒载 Roof Dead Load			项目负责人 Project Leader	Carson Liu	总页码 Total Page	共 8 张 Total Pieces: 8	页码 Page	第 8 张 Page 8	日期 Date	2023.12.28
楼面活载 Floor Live Load	10.0KN/m ²	屋面活载 Roof Live Load									比例 Scale	1:100